

ASGVIS

A rendering plug-in for designers

V-Ray for SketchUp

**Installation
Manual**

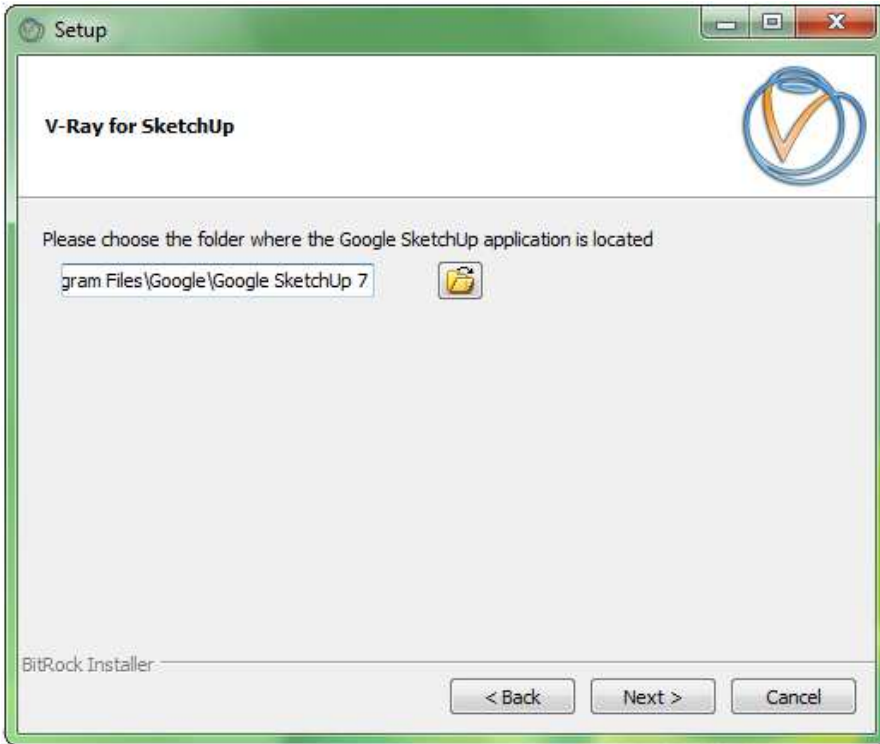
Installing V-Ray for SketchUp



Close SketchUp before beginning the installation wizard, double click on the installation file then click "Next".

Carefully review the License Agreement, place a dot in the button for "I accept the agreement", then click "Next".





The next window gives you the option to choose the folder where the files necessary to run V-Ray for SketchUp will be stored. Under normal circumstances you will not need to change this. Click "Next" to continue.

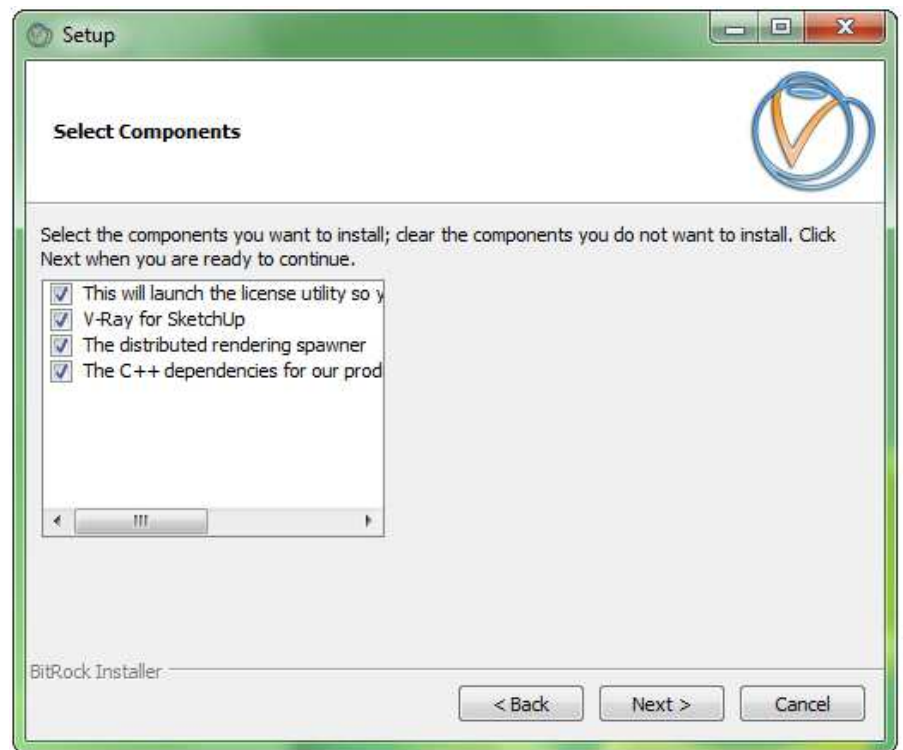
The next window allows you to install specific components of V-Ray for SketchUp. Under normal circumstances you will leave all of these options checked.

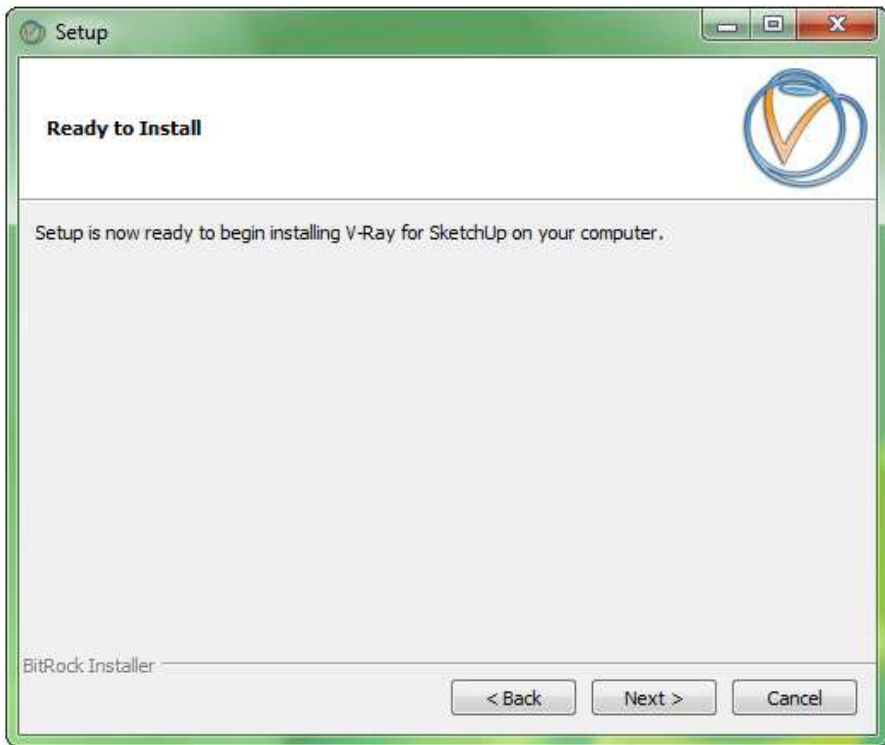
*The first option launches the license utility necessary for V-Ray to obtain a license

*The second option is V-Ray itself.

*The third option is the spawner necessary to utilize distributed rendering.

*The fourth contains data base information necessary for V-Ray to run.





You are now ready to begin the installation, Click "Next".

During installation you may continue working in the background, please note that you should not open SketchUp until the installation is complete.



Activating V-Ray for SketchUp

You have several options for activating V-Ray for SketchUp. Let's take a moment to discuss those options so that you can choose the one that best fits your needs. *One important new feature in this version is that all of our licensing options are now floating.*

What is a floating License?

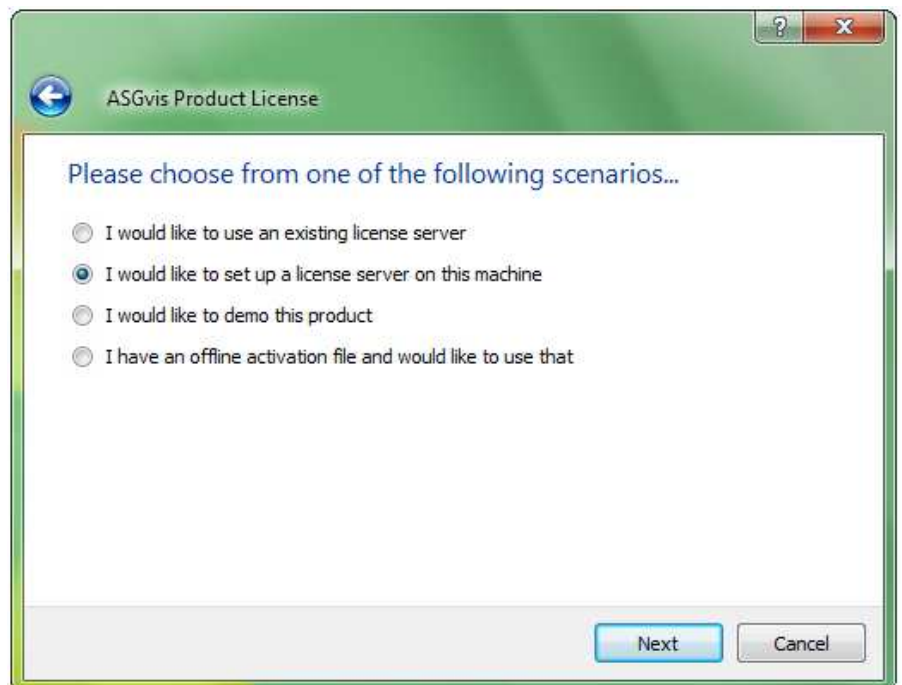
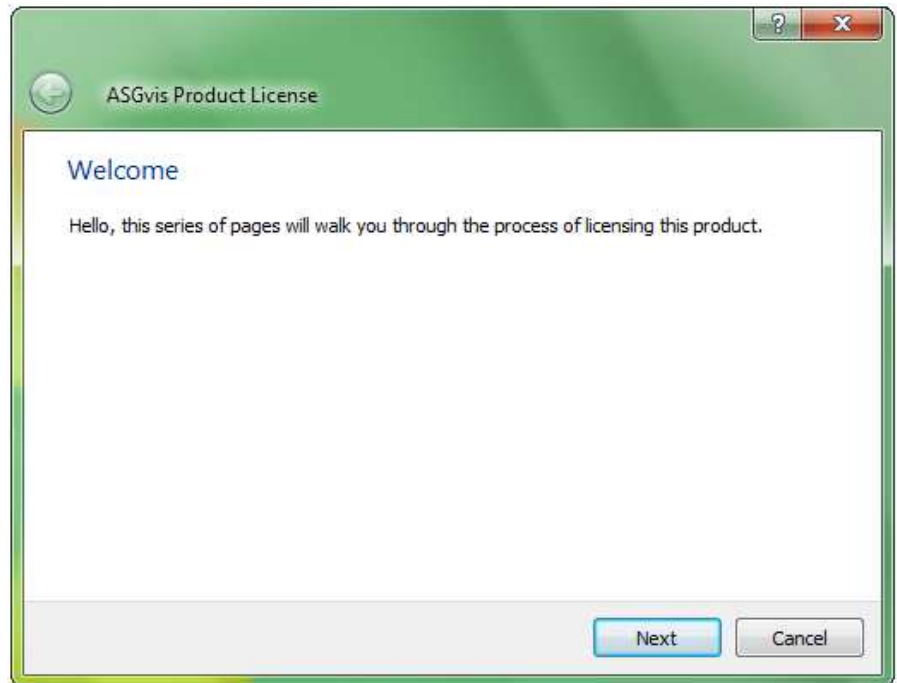
A floating license makes it easier for you as a user to share your license over your local area network and eliminates the need to re-activate your license if you decide later that another machine will need access to V-Ray on your network.

How does a floating license work?

A floating license allows multiple computers connected to the same local area network (LAN) to "take turns" using your available seats of V-Ray. This works by having one computer act as a server maintaining the balance of available seats vs. computers that would like to use V-Ray. When setting up V-Ray for SketchUp you will have to decide which computer will be acting as the license server. The task of regulating licenses is not overly complicated and does not require a powerful computer so you do have the option of using an older machine or any users computer as your license server. One important precaution to keep in mind when choosing your license server is that the licensing application is not capable of running as a service and as a result the computer that is acting as the licensing server will have to be powered on and logged in to windows for it to accomplish this task.

Configuring as a single user.

If there will be only one computer that will be using V-Ray for SketchUp then you may want to use that same computer as the license server. Click next on the above window and you will be taken to the window you see on the right. From there you will select "I would like to set up a license server on this machine" using the radial button to the left you will then be taken to the activation options. Proceed to page 8 to learn more about your options for activation.



Configuring for multiple users.

V-Ray for SketchUp has built in functionality that allows multiple users connected to the same local area network (LAN) to “take turns” using your available seats of V-Ray. This system requires a little more set-up, but is ideal in situations where you have several users that need access to V-Ray but not at the same time, or if you routinely reformat the computers on your network.

As stated on the previous page you will need to choose the computer that will act as the license server first. From that computer you have the option of performing a full installation and using the steps outlined in “Configuring as a single user” above. If the computer acting as your license server does not need a full version of V-Ray you can perform a custom installation by un-checking all options except “This will launch the licensing utility...” At the end of installation you will be prompted to activate the product and can then use the steps outlined above in “Configuring as a single user.”

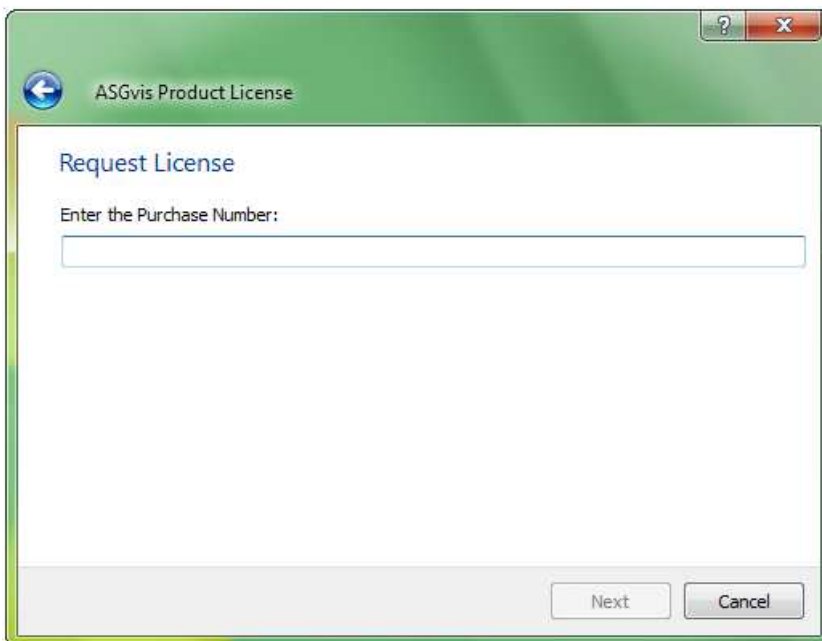
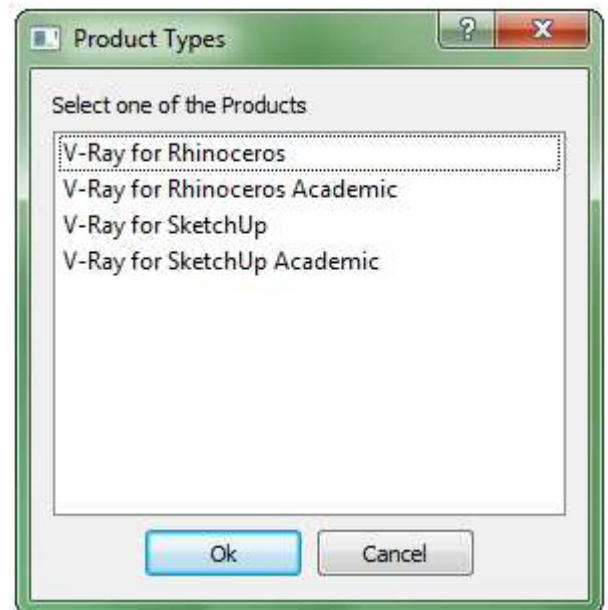
Adding additional seats to an existing server.

You may add seats to your serial number over time or have more than one serial number with available seats. If either apply to you, you can manually add additional seats to your floating license as needed. To access the floating license manager go to:

Start>All Programs>V-Ray for SketchUp>License Configuration

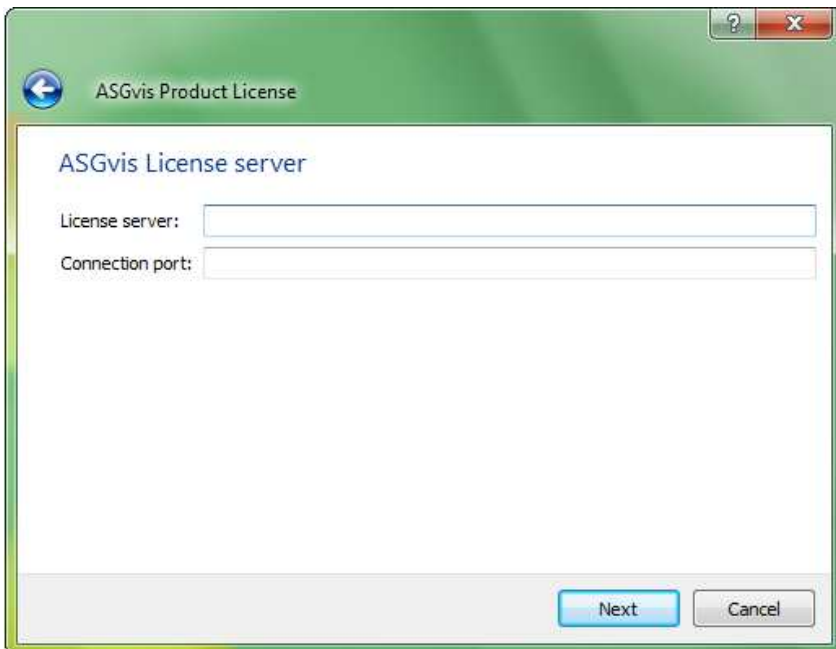
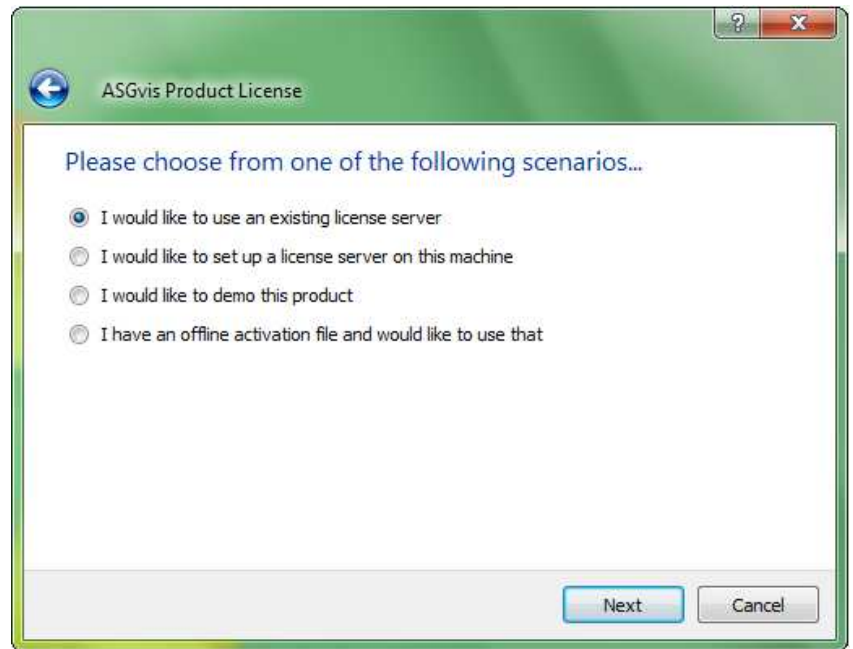
This will launch the floating license manager. Press the option to “Add existing license” and you will be prompted to select your product then enter your serial number.

Please remember to keep your serial number in a safe place and to keep a record of where it has been used.



Adding users to an existing server.

After you have configured your floating license manager you will want to point your machines toward the computer that will be the license server. To do this, install as normal and from the first screen of the activation process select “I would like to use an existing server” then click “Next”.



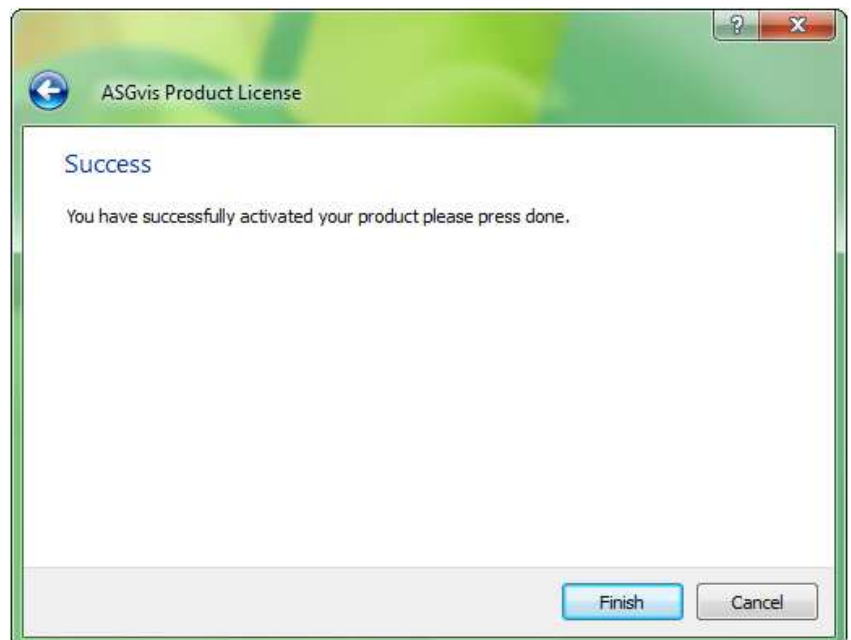
In the “License server” field you will enter either the name or IP address of the computer that is acting as your license server.

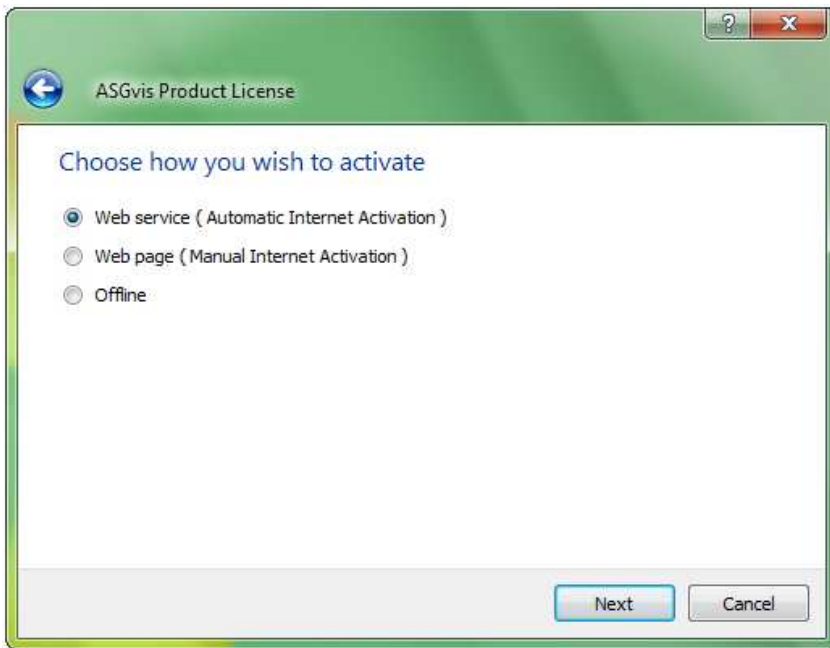
You can obtain the computer name by right clicking on the icon for “my computer” (“Computer” on Vista/Windows 7) and selecting properties from the options menu.

You can obtain the computers IP address by typing “ipconfig” into the command prompt (DOS).

The default connection port is 30305.

Once you have entered this information and pressed “Next” you should see a window confirming that your activation was successful.



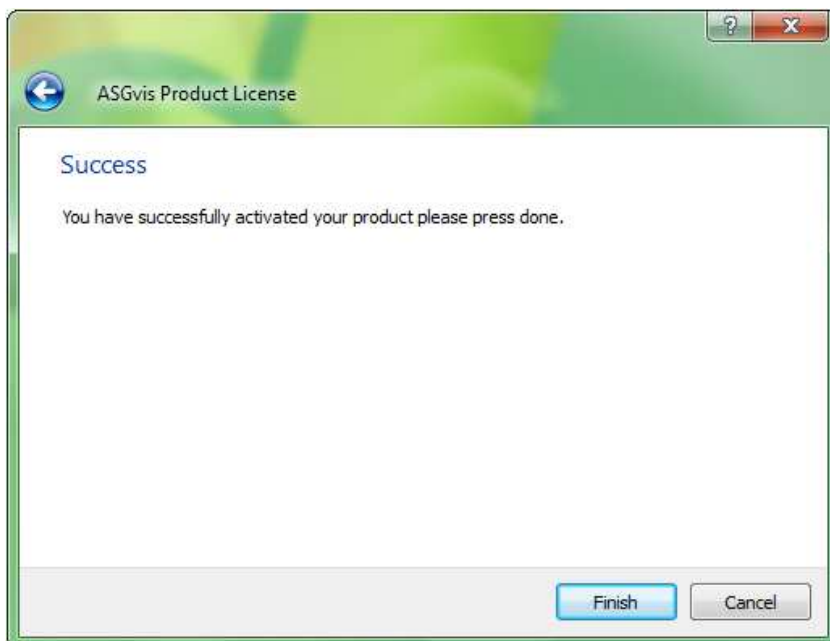
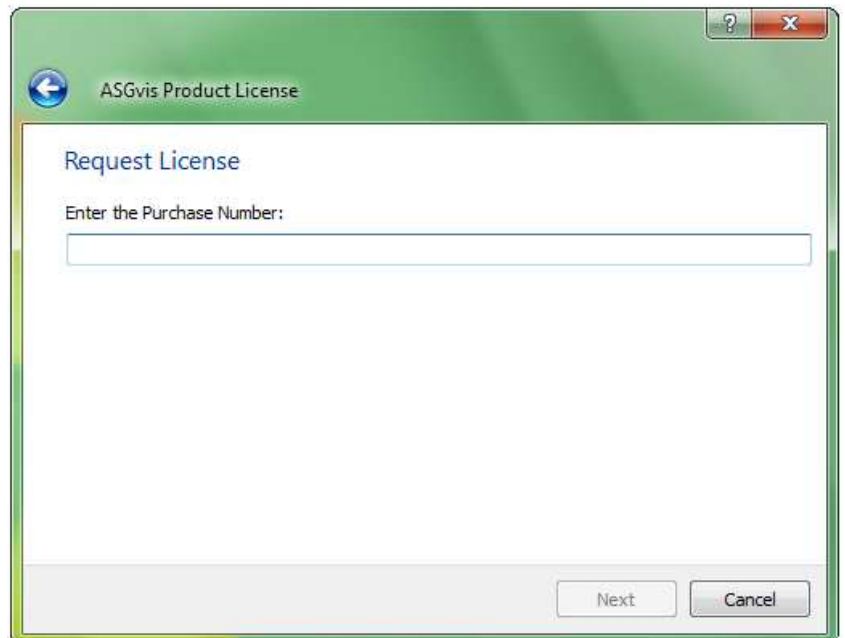


Activating online.

You can choose the method to send your activation information to our server. The most common way to do this is through the internet using the "Web Service" option. We will cover the alternate methods in the next few pages of this manual. For this option choose "Web Service" then click "Next".

Your purchase number or serial number is located in your original receipt. If you do not remember your serial number contact support@asgvis.com and we will work with you to find it.

Please enter it here then click "Next".

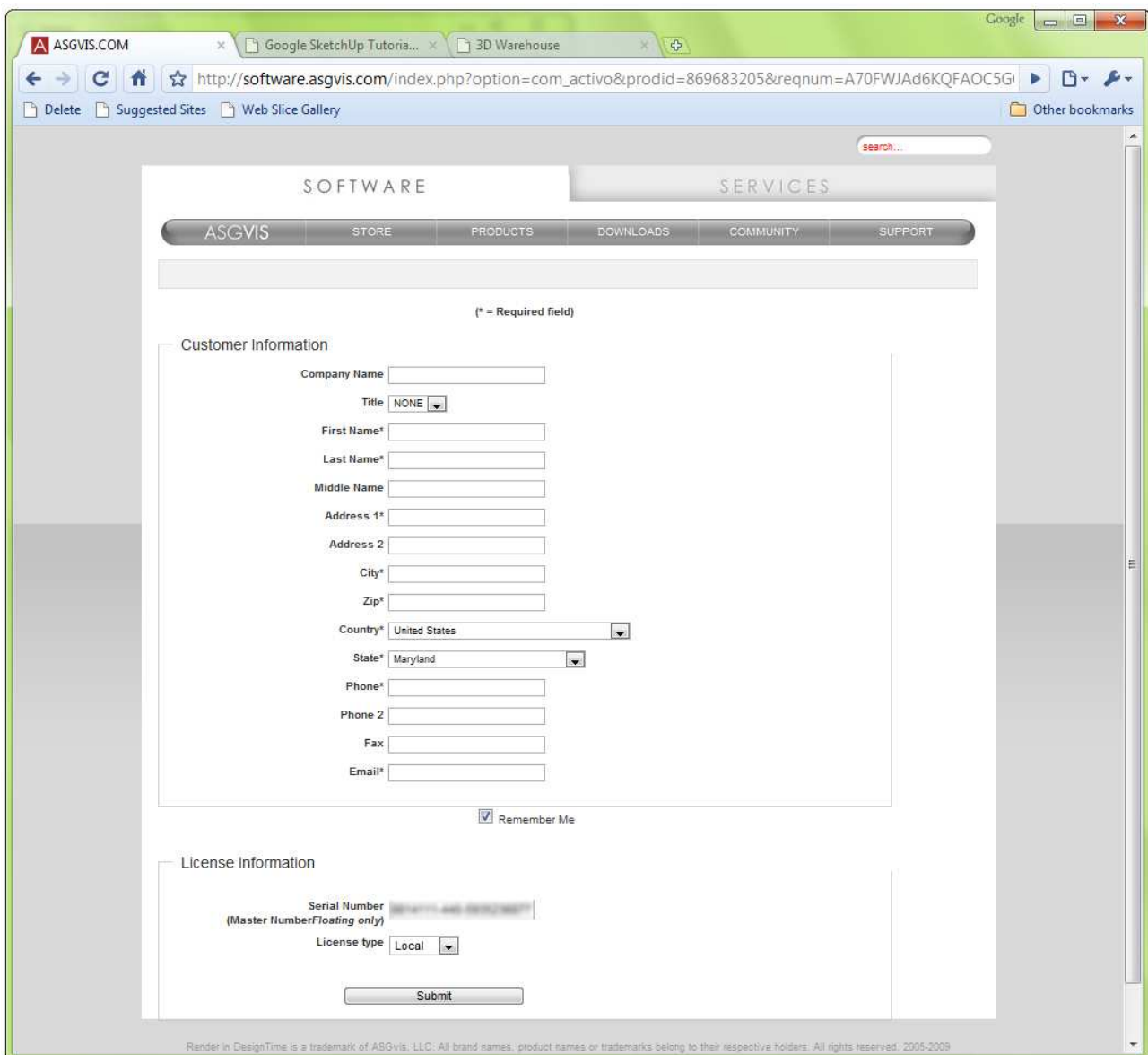
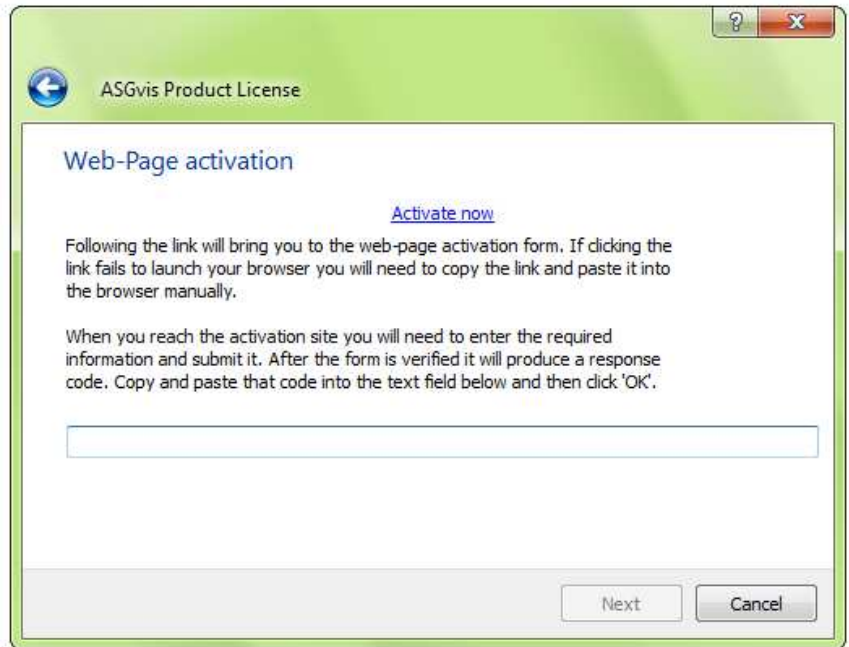


It may take a few moments for the installer to communicate with our server. After this is completed you should see a window explaining that you have successfully activated V-Ray for SketchUp.

Activating via webpage.

Some networks can block the transmission of information to our activation server. If you encounter an error when attempting to activate, you may wish to use an alternate method such as offline activation or manual website activation. To choose the manual website activation select it from the list of options then click "Next".

On the next window press the link for "Activate now". You will be taken to a webpage to fill out a short form. After completing this form you will be given a code which you will copy and paste back into the window shown to the right.

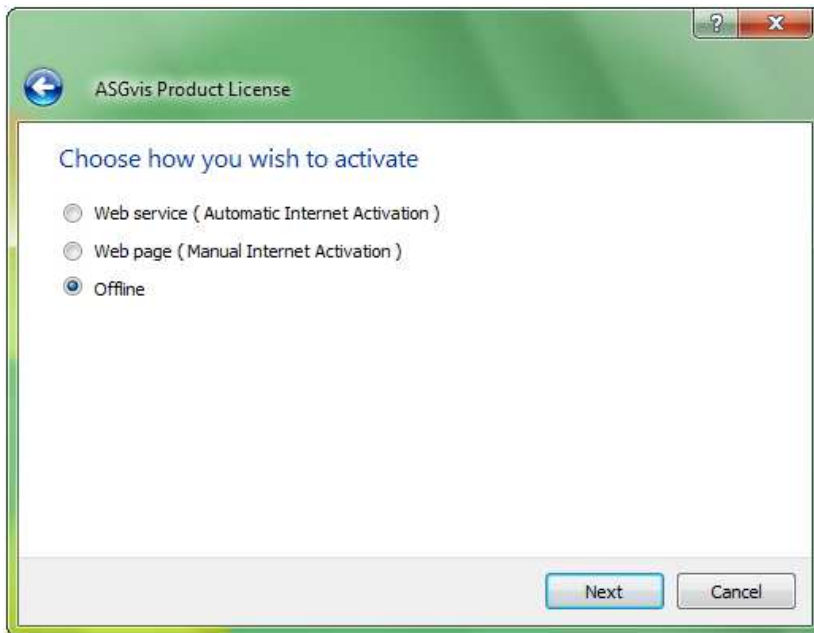
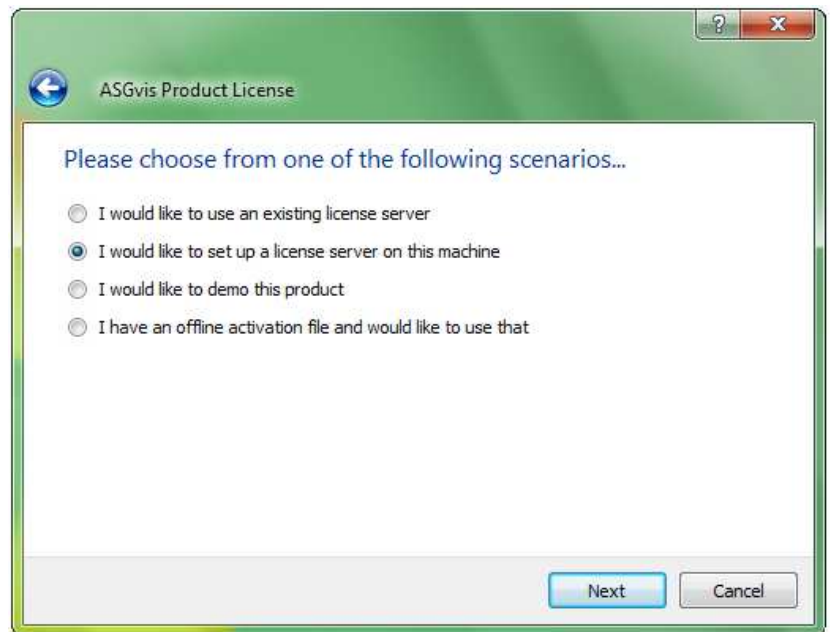


The image shows a screenshot of a web browser displaying the ASGvis website. The browser's address bar shows the URL: http://software.asgvis.com/index.php?option=com_activo&prodid=869683205&reqnum=A70FWJAd6KQFAOC5G. The website has a navigation menu with "ASGVIS" selected. Below the navigation, there is a search bar and a "Customer Information" form. The form includes fields for Company Name, Title (dropdown menu), First Name*, Last Name*, Middle Name, Address 1*, Address 2, City*, Zip*, Country* (dropdown menu), State* (dropdown menu), Phone*, Phone 2, Fax, and Email*. A "Remember Me" checkbox is checked. Below the Customer Information form is a "License Information" section with fields for Serial Number (Master Number/Floating only) and License type (dropdown menu). A "Submit" button is located at the bottom of the form. The footer of the page reads: "Render in DesignTime is a trademark of ASGvis, LLC. All brand names, product names or trademarks belong to their respective holders. All rights reserved. 2005-2009".

Offline activation.

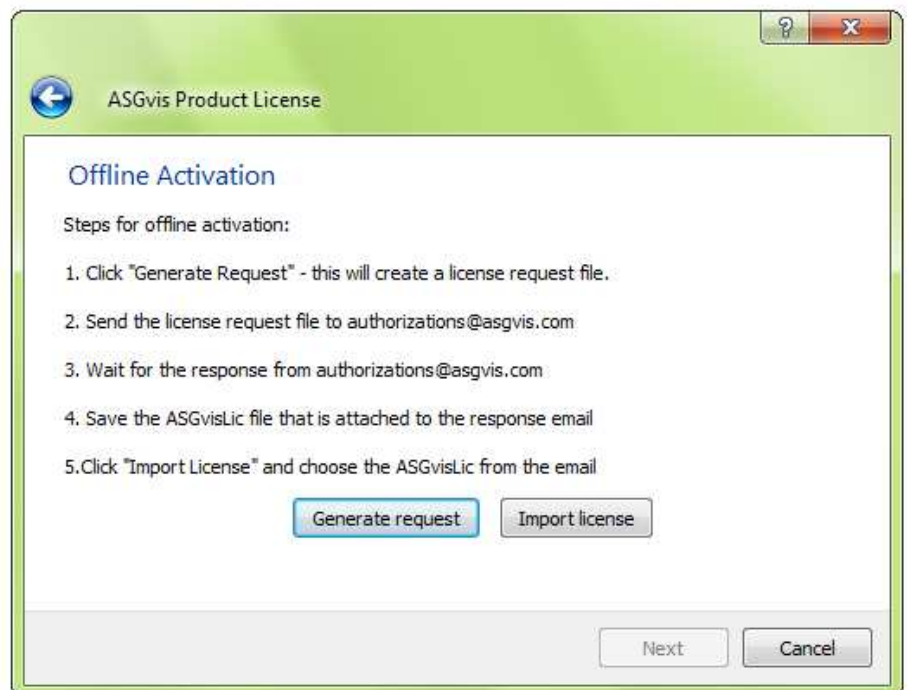
When all else fails, or if you have no internet connection, offline activation is the most fail-safe method to get the software up and running.

To begin offline activation you will start from the computer that will act as your license server. Select "I would like to set up a license server on this machine" then click "Next".

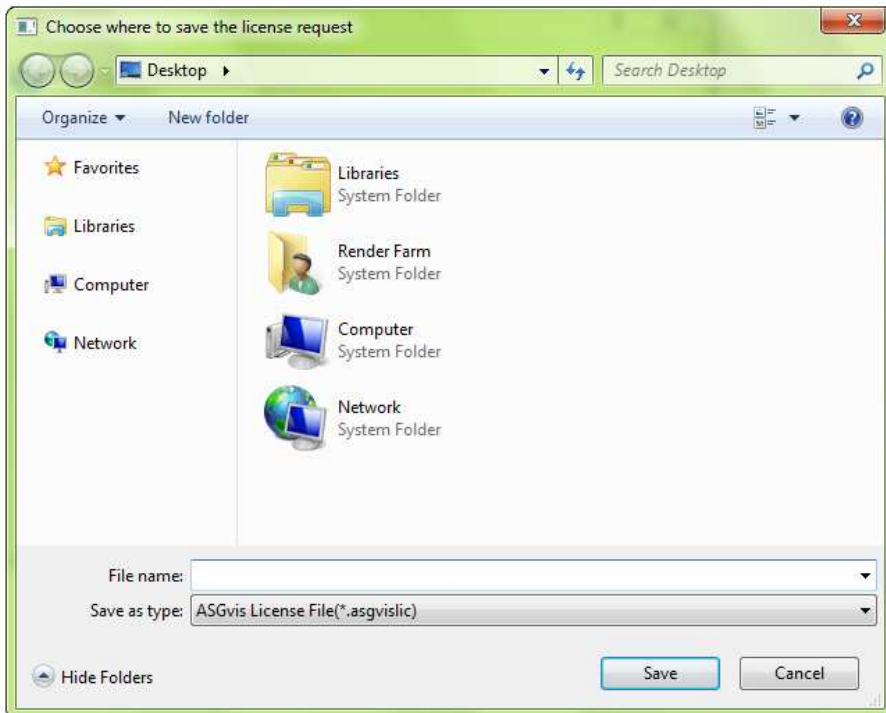
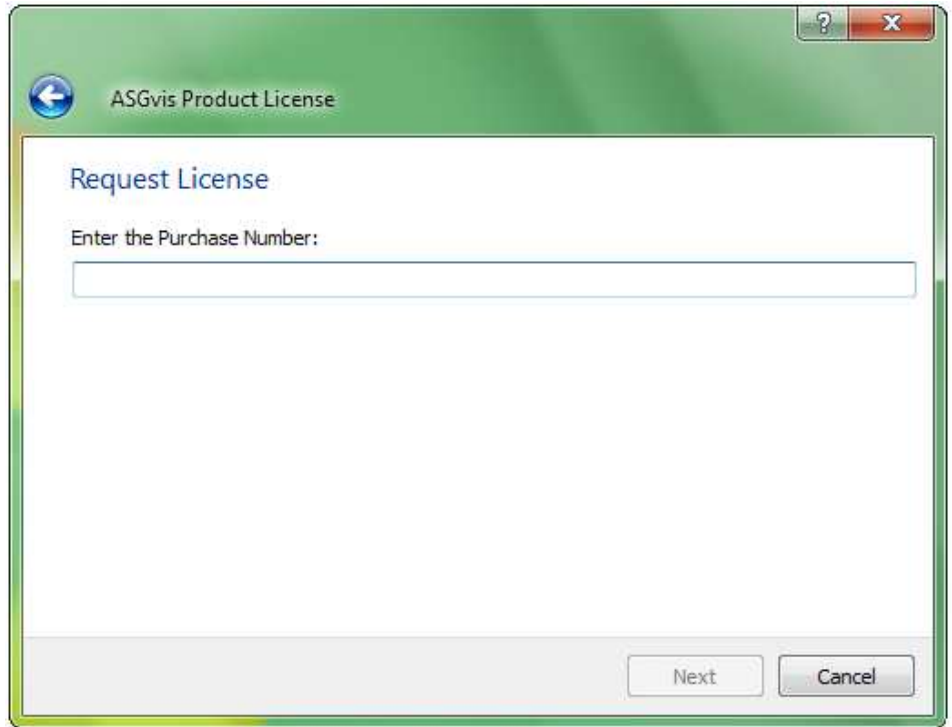


Select "Offline" using the radial buttons then press "Next".

Click "Generate Request" to create your offline activation file.

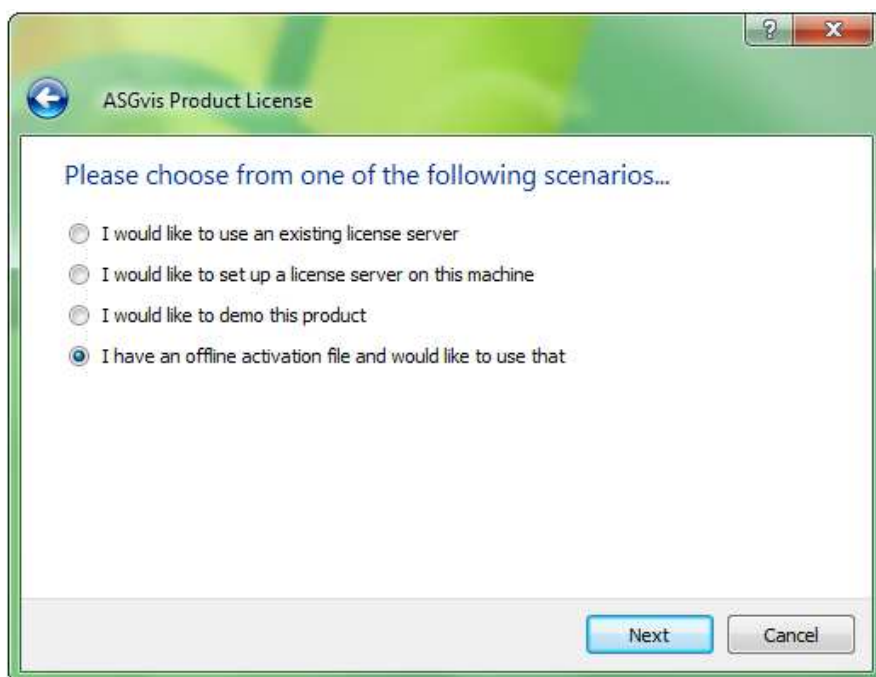
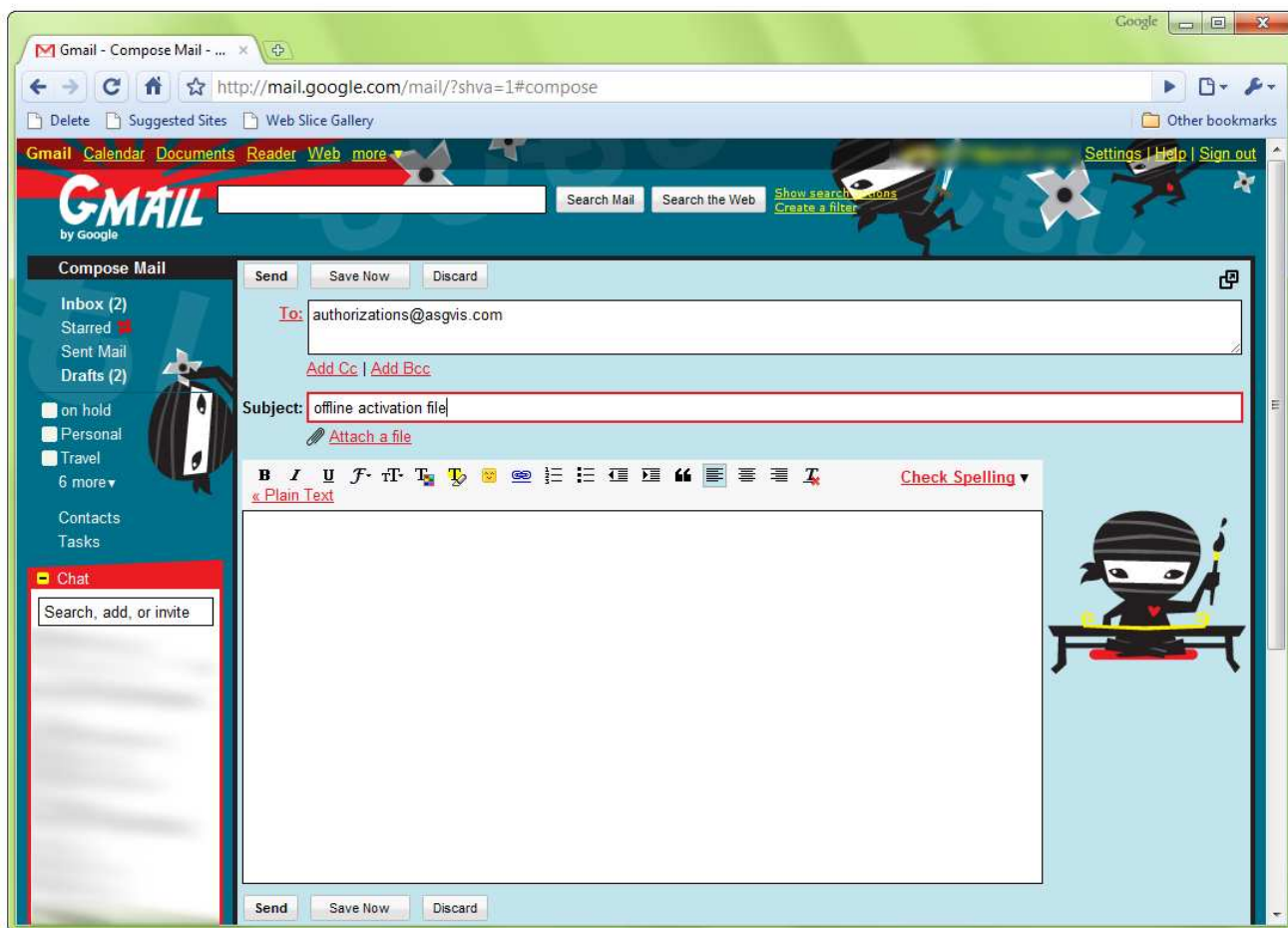


Your purchase number or serial number is located in your original receipt. If you do not remember your serial number contact support@asgvis.com and we will work with you to find it. Click “Next” to continue.



Choose a destination file to save your offline activation file and a name for the file. Pick somewhere easy to remember. The file name can be anything you would like.

Open your email and send the file you have created to authorizations@asgvis.com. Please allow 2 to 4 business days for processing. Under normal circumstances you should receive a response within 24 hours.



When you receive your response with the processed activation file you can restart the activation process and select "I have an offline activation file and would like to use that" to complete the activation process.

Need Help?

Email support.

The ASGvis support team is ready to help you anytime you need us.

support@asgvis.com for problems with the software

authorizations@asgvis.com for trouble activating V-Ray, be sure to provide your serial number

info@asgvis.com for any other questions

Help getting started with V-Ray.

There are tons of valuable resources to help you achieve professional quality results using V-Ray for SketchUp.

You can view instructional documents and videos as well as this manual and the user manual from the support section of our website:

http://software.asgvis.com/index.php?option=com_content&view=article&id=182&Itemid=480

Our free user forums are a place where users of all skill levels come together and provide useful tips and tricks to help you get the most out of V-Ray, and a wonderful place to find peer review.

<http://forum.asgvis.com/>

ASGvis offers one on one training in person or across the internet for a low price. If you are would like to receive training contact info@asgvis.com for more information.

Thank you for purchasing

V-Ray for SketchUp

ASGvis LLC
3430 2nd Street, Suite 400
Brooklyn, Maryland 21225

All brand names, product names or trademarks belong to their respective holders. All rights reserved.

This document applies to version

Manual designed and written by Keith Thompson and Fernando Rentas Pedrogo